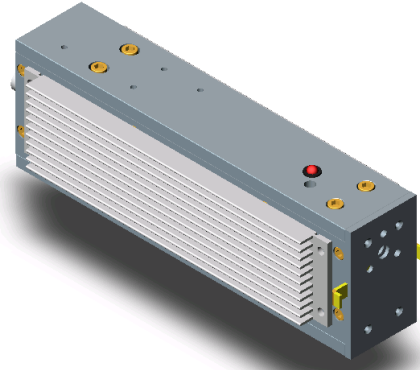


Low Power CO₂ Laser

Model L3 Specifications

Model	L3
Wavelength (µm)	10.3 - 10.8
CW Power (W)	400 mW
Peak Power (W)	400 mW
Power Stability	±20%
Mode Quality (M ²)	< 1.1
Beam Waist Diameter	2.4 mm
Full Div. Angle	5.5 mrad
Supply Voltage (DC)	12V 20W
Cooling Requirement	Air Cooled
Working Temperature	5-40° C
Dimensions (LxWxH, inch)	7.5x2x2.5



Factory warranty: One year for parts and labor due to manufacturing quality, regardless of laser usage

Options available:

- Fan Cooling (Model L3S)
- Power stabilization to ±2% (Model L3S)
- Real time power sampling

- * Includes DC power supply and RF driver & laser controller
- * Please notify us if CLASS IIIb is required
- * Specifications subject to change without notice.
- * Please contact us if you have custom requirements

www.accesslaser.com

