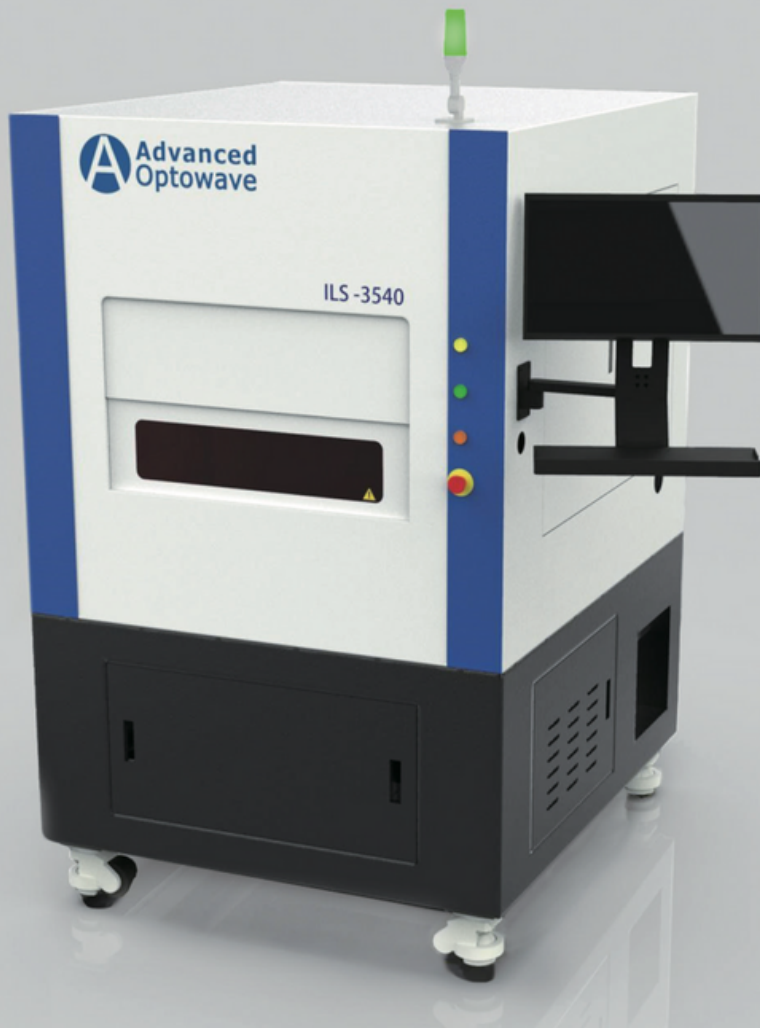
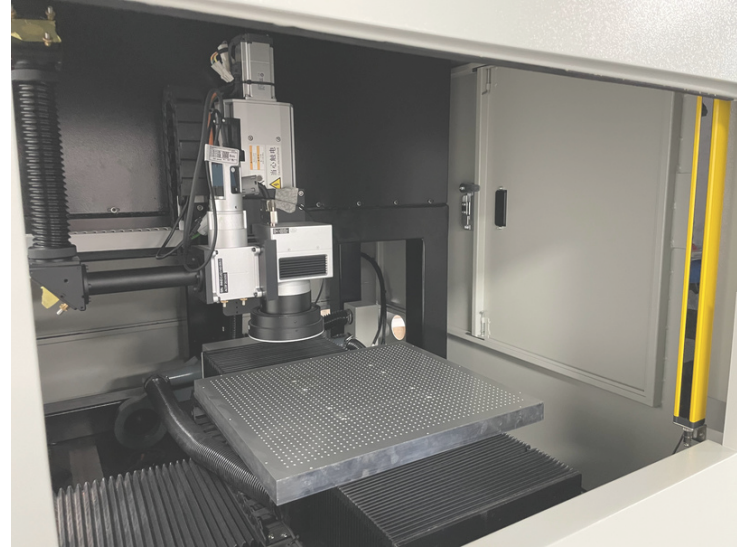


# AOC1000

## Laser Micromachining system

The AOC1000 is a compact laser micro-machining system for processing various materials, such as metals, alloys, ceramics, PCD, polymers, as well as FPC material. The platform can be integrated with multiple lasers and wavelengths, as well as a variety of motion stage options. The AOC1000 also offers a pro version which the precise motion stages were built on a granite base. The system is designed to achieve high precision laser micromachining.



## FEATURES & BENEFITS

- High precision micromachining
- Large working chamber and automatic lifting door
- Easy to use and intuitive system software
- Coaxial vision system
- Class 1 laser enclosure with high ergonomic design

## APPLICATIONS

- Cutting of metals, alloys, also delicate ones such as titanium and nitinol
- cutting of brittle materials
- Polymer processing
- FPC electronics

### INNO LASER TECHNOLOGY CORPORATION LIMITED.

3F, Qingyi Building, No.8 Langshan 2nd road, North part of Hii-tech industrial Park, Nanshan District, Shenzhen, China

Tel: +86-755-8635-0999 | Fax: +86-7558635-0000

Email: [info@inno-laser.com](mailto:info@inno-laser.com) | [Http://www.inno-laser.com](http://www.inno-laser.com)

### ADVANCED OPTOWAVE CORPORATION

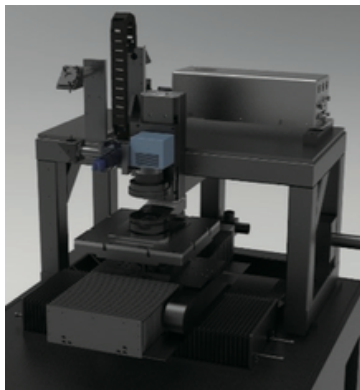
105 Comac St. Ronkonkoma, NY 11779 USA

Tel: +1 (631)-750-6035

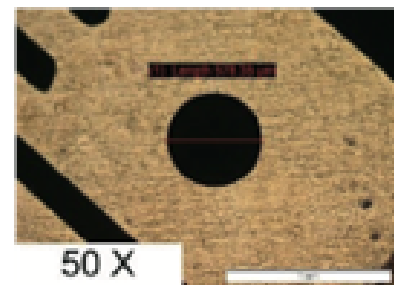
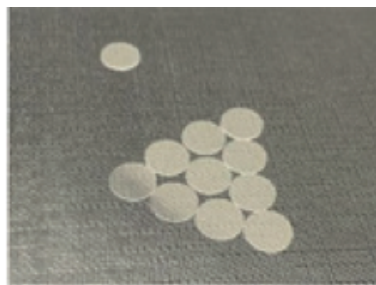
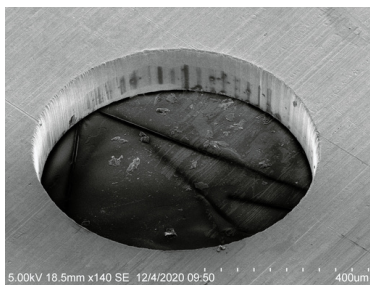
Fax: +1(631)-803-4445

Email: [info@a-optowave.com](mailto:info@a-optowave.com) | [Http://www.a-optowave.com](http://www.a-optowave.com)

TECHNICAL SPECIFICATIONS		AOC1000
Interface		
Display and Operation	24" display and keyboard	
Data Interface	USB device, RS232	
SIZE & WEIGHT		
Width	1200 mm (47.2 in.)	
Depth	1370 mm (54 in.)	
Height	1900 mm (74.8 in.)	
Weight	2200 lbs	
AREA NECESSARY		
Width	1700 mm (67 in.)	
Depth	1870 mm (73.6 in.)	
Height	2400 mm (94.5 in.)	
Area (m <sup>2</sup> )	3.2 m <sup>2</sup>	
ELECTRICITY		
Fuse	16 (A)	
Nominal Voltage	220VAC ±10%	
Nominal Frequency	50/60 Hz	
PNEUMATIC PROVISION		
Compressed Air	0.5-0.7 Pa	



PRECISION MODULE	
X/Y Axis Travel (mm)	350×400
Drive	Linear Servo Drive
Positioning Accuracy (mm)	±0.003
Repeatability Accuracy (mm)	±0.001
Z Axis Travel (mm)	60
Positioning Accuracy (mm)	±0.03
Repeatability Accuracy (mm)	±0.01



## INNO LASER TECHNOLOGY CORPORATION LIMITED.

3F, Qingyi Building, No.8 Langshan 2nd road, North part of Hii-tech industrial Park,  
Nanshan District, Shenzhen, China  
Tel: +86-755-8635-0999 | Fax: +86-7558635-0000  
Email: info@inno-laser.com | Http://www.inno-laser.com

## ADVANCED OPTOWAVE CORPORATION

105 Comac St. Ronkonkoma, NY 11779 USA  
Tel: +1 (631)-750-6035  
Fax: +1(631)-803-4445  
Email: info@a-optowave.com | Http://www.a-optowave.com