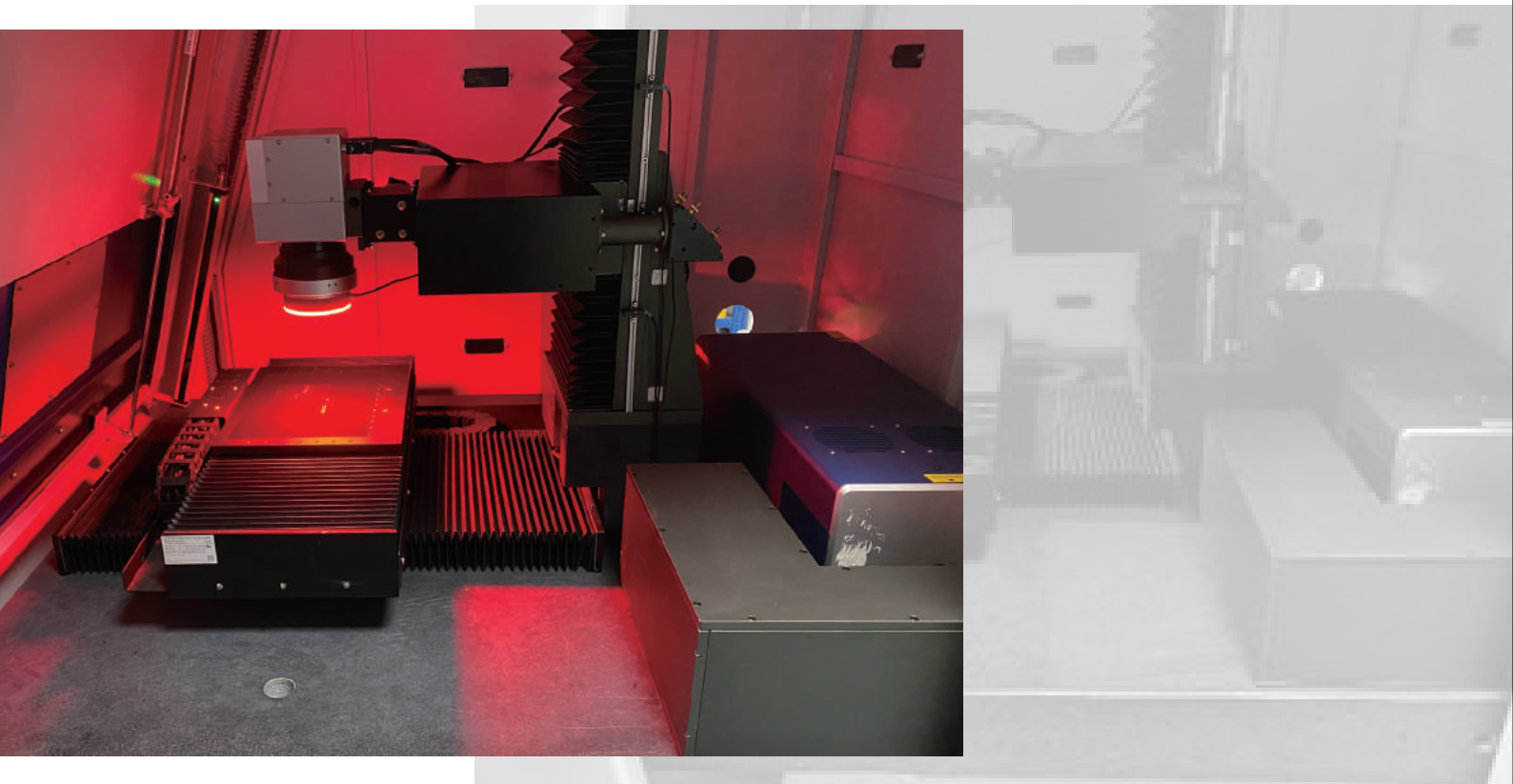


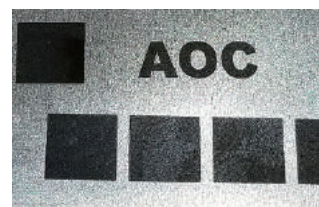
AOC2000

Laser marking workstation

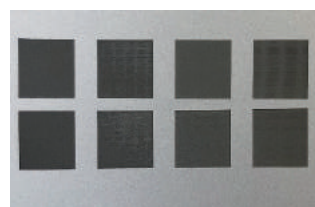




The AOC2000 is a highly integrated and user-friendly advanced laser marking system which can handle nearly every industrial marking application. Combined with ultrashort pulse lasers, motion hardware and on-axial CCD camera with our intuitive user interface (GUI), high contrast permanent marks can be made on exotic metals, glass, polymers, ceramics, etc.



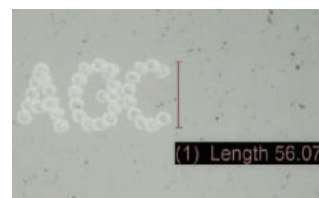
Anti-corrosion black marking on SUS316 with ps-IR laser



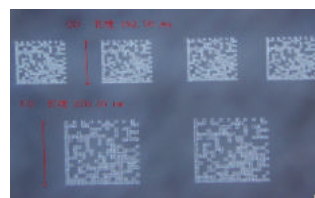
Anti-corrosion black marking on anodized Al with fs-Green laser



Anti-corrosion black marking on Ti with ps-IR laser



Internal stealthy marking in diamond with ps-Green laser



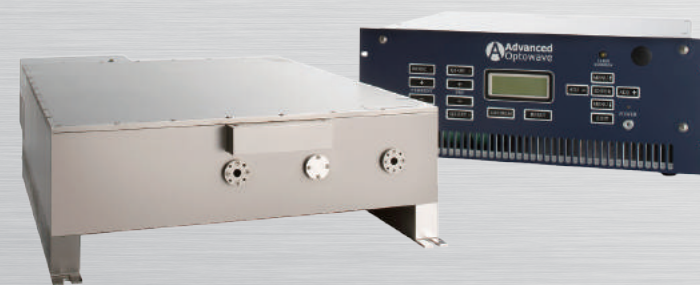
Internal stealthy marking in sapphire with fs-IR laser



Surface burn-free marking on leather with fs-Green laser

Features

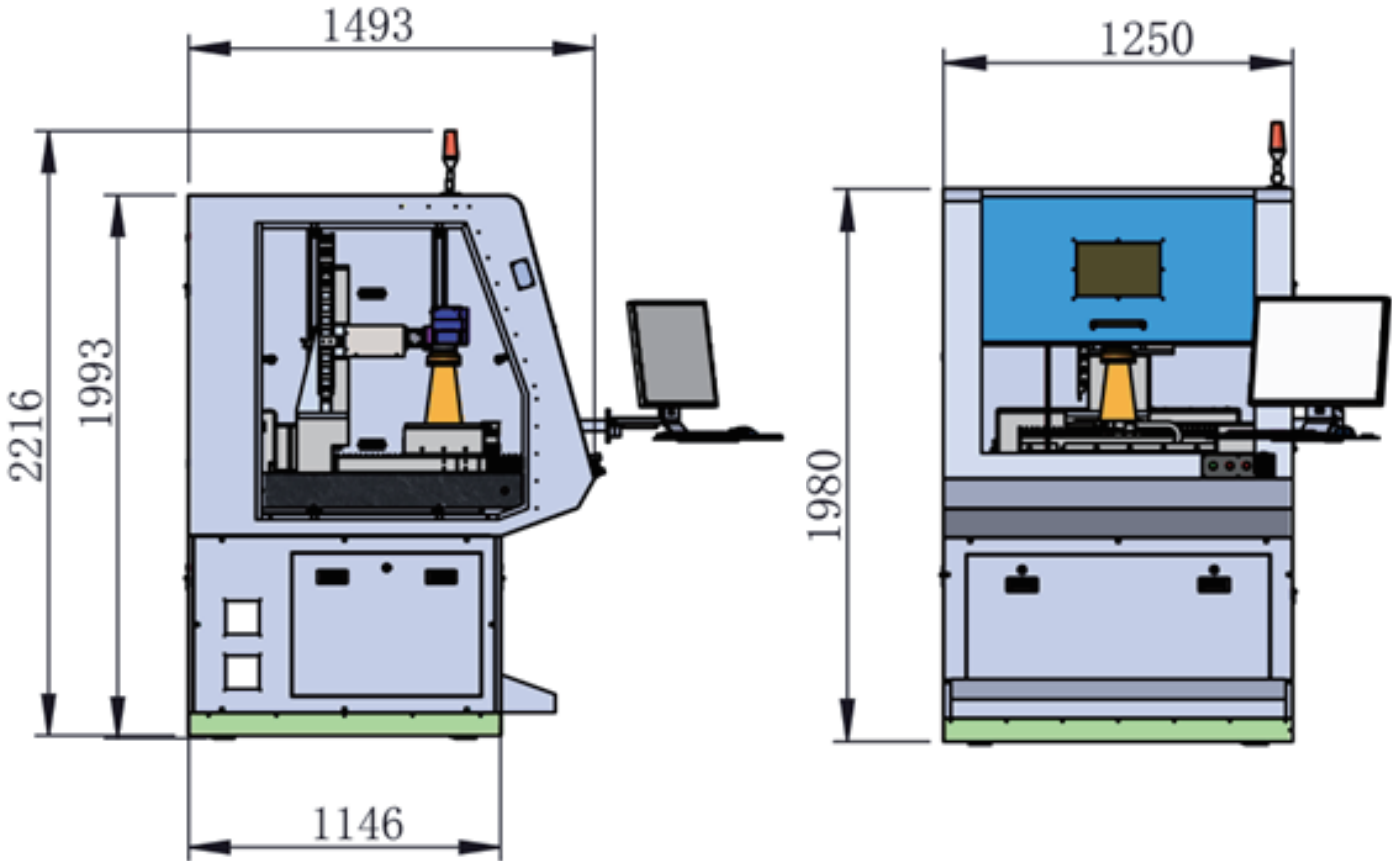
- Class 1 laser system
- High ergonomic design and safety standards
- State-of-the-art Pico and Femto laser marking sub-systems
- XYZ servo axes for positioning, motion, and focal height adjustment
- On-axial CCD camera
- High contrast marking
- Permanent, corrosion-resistant marks
- Various materials
- Options available



- Picosecond IR (1064nm)
- GR (532nm) and UV (355nm) lasers

- Femtosecond IR (1030nm)
- GR (515nm) lasers

SIZE & WEIGHT		AOC2000 Marking
Depth		1450mm (57 in.)
Height		2000mm (78.7 in.)
Width		1200mm (47.2 in.)
Weight		2,000 lbs
AREA NECESSARY		
Depth		1950mm (76.7 in.)
Width		1700mm (67.7 in.)
Height		3000mm (118 in.)
Area (m²)		2.5 m²
Available Laser Systems		
AOPico™ Montauk Series - AOFemto™		
AOPico™ 3W/5W air-cooled system		
AOFemto™ 2W air-cooled system		
POSITIONING LINEAR AXIS TRAVEL LENGTH		
Z-axis		350mm, speed 20mm/s
X-axis		350mm, speed 500mm/s
Y-axis		350mm, speed 500mm/s
MAXIMUM WEIGHT OF WORK PIECE		
Max. Weight of Work Piece (incl. clamping)		25KG
Max. Dimension of Work Piece		300mm×300mm
ELECTRICITY		
Fuse		16(A)
Nominal Voltage		110/230V
Nominal Frequency		50/60 Hz
Power Input		6.6 KW
PNEUMATIC PROVISION		
Fume extractor and compressed air system		0.4-0.7 Pa
LASER SAFETY CLASS		
CDRH class 1 laser system enclosure		





英诺激光
INNO LASER

INNO LASER TECHNOLOGY CORPORATION LIMITED.

3F, Qingyi Building, No.8 Langshan 2nd Road, North Part of Hi-Tech Industrial Park,
Nanshan District, Shenzhen, China

Tel: +86-755-8635 0999

Fax: +86-755-8635 5000

Email: info@inno-laser.com

[Http://www.inno-laser.com](http://www.inno-laser.com)

ADVANCED OPTOWAVE CORPORATION

Advanced Optowave Corporation USA

105 Comac St. Ronkonkoma, NY 11779 USA

Tel: : 001-631-750-6035

Fax: 001-631-803-4445

Email: info@a-optowave.com

[Http://www.a-optowave.com](http://www.a-optowave.com)