

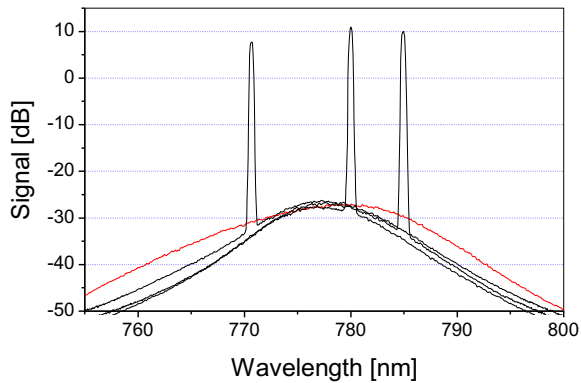
Serval

Tunable Diode Laser Amplifier
Tapered Amplifier Technology

Scientific Lasers

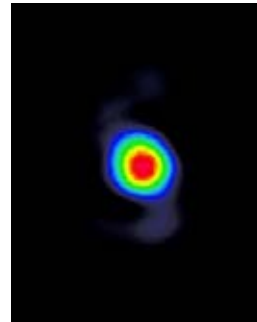


Side Mode Supression



Red curve: TEC-400 without master
Black curve: Injected master laser at
different wavelengths

Beam Quality



Typical Values:
Power: 800 mW
 $M^2 < 1.7$

Specifications

Output Power	500 mW .. 3000mW (depending on wavelength)
Wavelength	735nm, 765nm, 780 nm, 795nm, 830nm, 850nm, 915nm, 980nm, 1020nm, 1060 nm, 1080nm, or customer specified
Linewidth	depending on Master laser
Side Mode Supression	> 40 dB for a normal ECDL
Beam Waist ($2 w_0$)	2.5 mm x 2.5 mm ... 3 mm x 1.5 mm
Beam Divergence	< 2 mrad
Beam Quality M^2	Depending on Master laser
Output Polarization	p - polarized / s - polarized (depending on wavelength)
Weight	Laser Head: 0.6 kg, Power Supply: 4.5 kg
Laser Head Dimension (W x H x L)	54 x 58 x 165 mm

Application

*Absorption Spectroscopy
Optical Cooling
& Trapping*

Please contact us

Sacher Lasertechnik
GmbH
R. Breitscheid Str. 3-7
D-35037 Marburg/Lahn
Germany
Tel.: +49 6421 305 - 0
Fax: +49 6421 305299

Sacher Lasertechnik
LLC
5765 Equador Way
Buena Park, CA90620
U. S. A.
Tel.: 1-800-352-3639
Fax: 1-714-670-7662

Email: contact@sacher.de
Web: <http://www.sacher.de>

