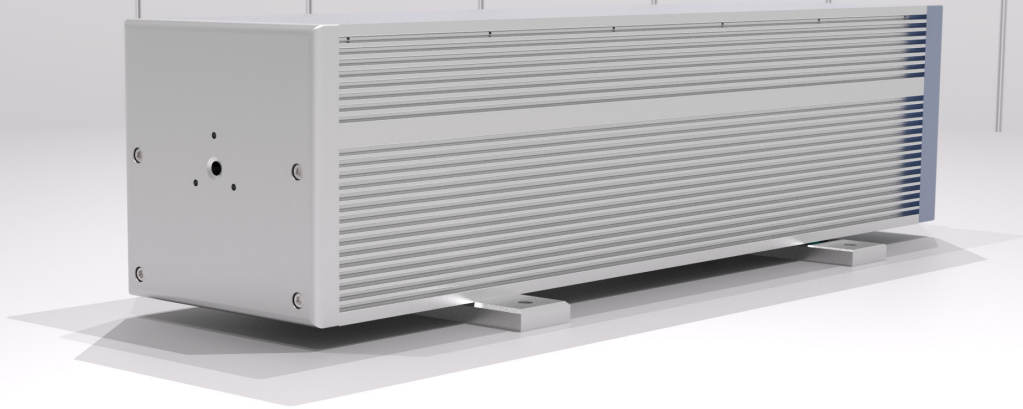


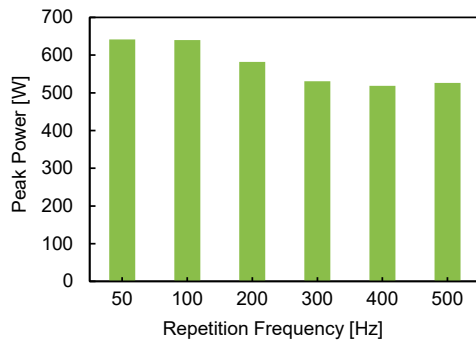
DL500



Laser Power

Wavelength	9.3 μm
CW Power	5 W
Power Stability	$\pm 10\%$
Duty Cycle	0 - 1.5 %
Pulse Repetition Frequency	0 - 500 Hz
Rise Time	10 μs
Fall Time	15 μs
Peak Power	500 W

Typical performance:



Dimensions & Weight

Laser Weight	35.5 lbs
Dimensions L x W x H	23.5 x 5.5 x 5.5 in

Beam Characteristics

Beam Waist Diameter	2.2 mm
Waist Location	Output Coupler
Mode Quality	$M^2 \leq 1.1$
Full Divergence Angle	6.2 mrad
Polarization	Random, Linear

Heat & Cooling

Heat Dissipation	≤ 500 W
Cooling Requirement	Air Cooled
Working Temperature	5 - 40 $^{\circ}\text{C}$ (non-condensing)
Storage Temp. Range	5 - 50 $^{\circ}\text{C}$ (non-condensing)

DC Power Requirements

Laser RF Driver	48 V
-----------------	------

Notes

Power Stability calculated by: $\pm \frac{P_{max} - P_{min}}{P_{max} + P_{min}}$

Beam specifications measured at: $\frac{1}{e^2}$

Average or pulsed power may exceed listed value. All specifications are measured at the strongest line and are subject to change without notice. Stability measured after 45 minute warm-up to allow laser head to reach thermal equilibrium.



ACCESS LASER
Member of the TRUMPF Group

